

2020 Provider Broadband Service Inventory

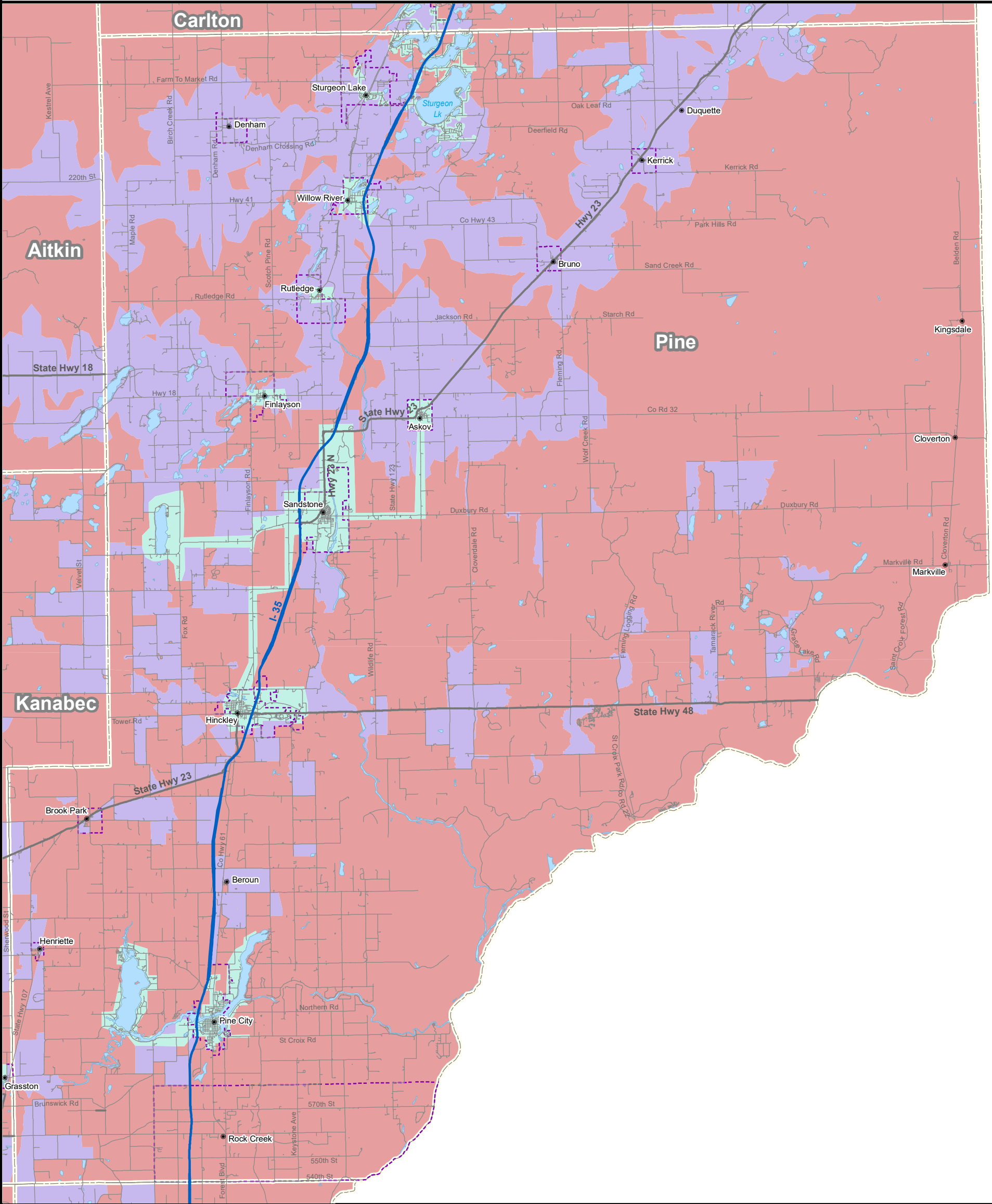
Pine County

Minnesota

Created April 2020

Border-to-Border
Broadband
Development
Grant Program

Unserved, Underserved
and Served Broadband
Areas



- Interstate
- US Road
- Local Road
- Municipal Boundary
- County Boundary
- Water

- Wireline Broadband of at Least 100M/20M
- Underserved Area
(Wireline Broadband of at Least
25M/3M but less than 100M/20M)
- Unserved Area
(No Wireline Broadband of at Least
25M/3M)

This map was prepared by Connected Nation under contract with the Minnesota Department of Employment and Economic Development. The map represents areas of broadband service availability based on provider data submitted to and analyzed by Connected Nation. This data is current as of December 31, 2019.

Additional maps and data are available at <http://mn.gov/deed/programs-services/broadband/maps>. Upon request, this information can be made available in alternate formats for people with disabilities by contacting the DEED Office of Broadband Development at 651-259-7610.

Submit questions or recommended changes to: DEED.broadband@state.mn.us

© Copyright 2020, State of Minnesota, St. Paul, MN