

# 2022 Provider Broadband Service Inventory

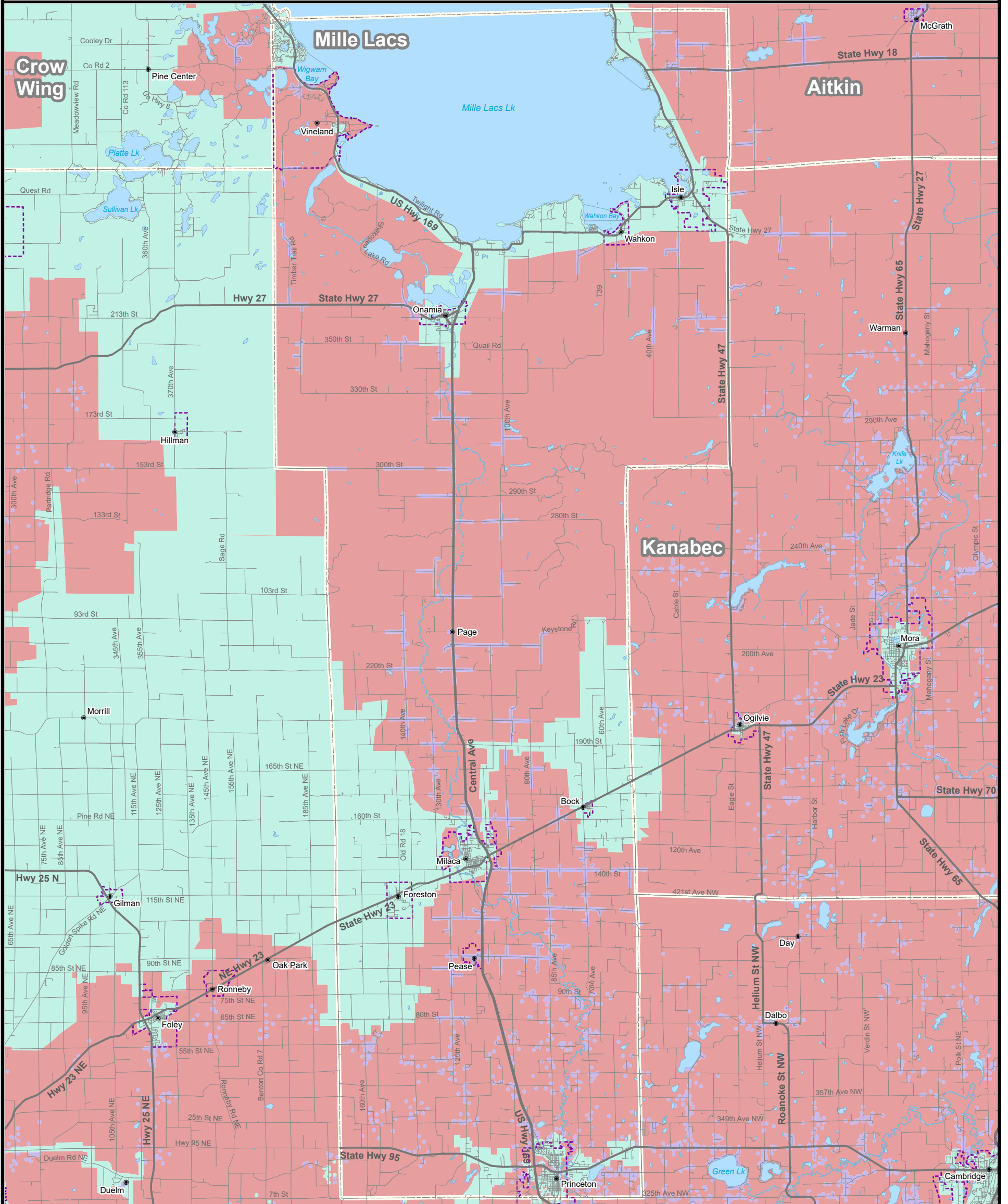
Unserved, Underserved and Served Broadband Areas

Mille Lacs County

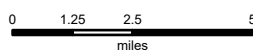
Minnesota

Created October 31, 2022

Border-to-Border  
Broadband  
Development  
Grant Program



- Interstate
- US Road
- Local Road
- Municipal Boundary
- County Boundary
- ~ Water
- Wireline Broadband of at Least 100M/20M
- Underserved Area  
(Wireline Broadband of at Least 25M/3M but less than 100M/20M)
- Unserved Area  
(No Wireline Broadband of at Least 25M/3M)



This map was prepared by Connected Nation under contract with the Minnesota Department of Employment and Economic Development. The map represents areas of broadband service availability based on provider data submitted to and analyzed by Connected Nation. This release reflects updates received as of October 2022.

Additional maps and data are available at <http://mn.gov/deed/programs-services/broadband/maps>. Upon request, this information can be made available in alternate formats for people with disabilities by contacting the DEED Office of Broadband Development at 651-259-7610.

Submit questions or recommended changes to: [DEED.broadband@state.mn.us](mailto:DEED.broadband@state.mn.us)