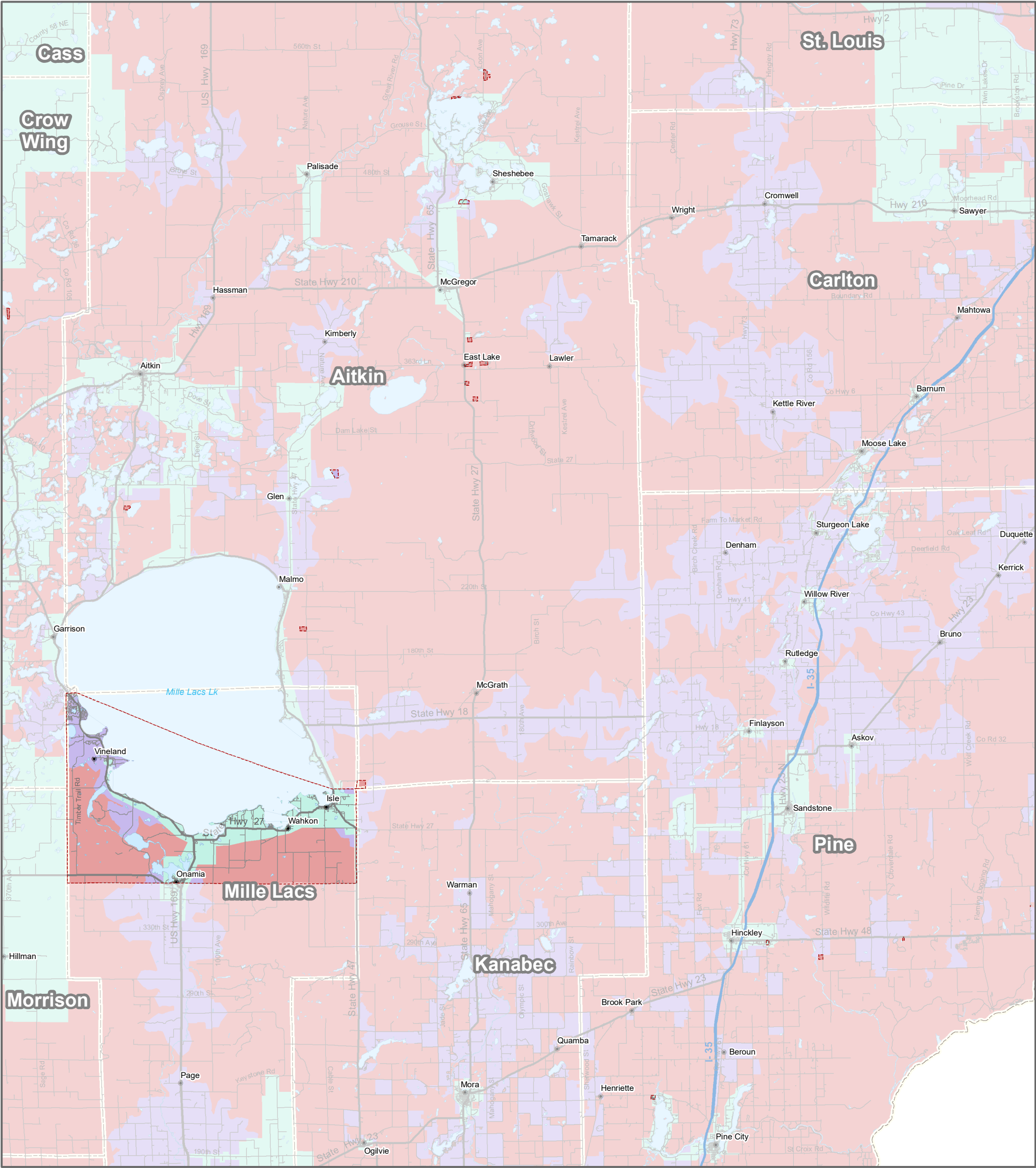


2020 Provider Broadband Service Inventory

Border-to-Border Broadband Development Grant Program

Unserved, Underserved and Served Broadband Areas

MILLE LACS RESERVATION



mn EMPLOYMENT AND
ECONOMIC DEVELOPMENT
OFFICE OF BROADBAND DEVELOPMENT

This map was prepared by Connected Nation under contract with the Minnesota Department of Employment and Economic Development. The map represents areas of broadband service availability based on provider data submitted to and analyzed by Connected Nation. This data is current as of December 31, 2019.

Additional maps and data are available at <http://mn.gov/deed/programs-services/broadband/maps>
Upon request, this information can be made available in alternate formats for people with disabilities by contacting the DEED Office of Broadband Development at 651-259-7610.

Submit questions or recommended changes to: DEED.broadband@state.mn.us

© Copyright 2020, State of Minnesota, St. Paul, MN



- Interstate
- US Road
- Local Road
- County Boundary
- Water

- Wireline Broadband of at Least 100M/20M
- Underserved Area
(Wireline Broadband of at Least 25M/3M but less than 100M/20M)
- Unserved Area
(No Wireline Broadband of at Least 25M/3M)



0 3 6 12
miles